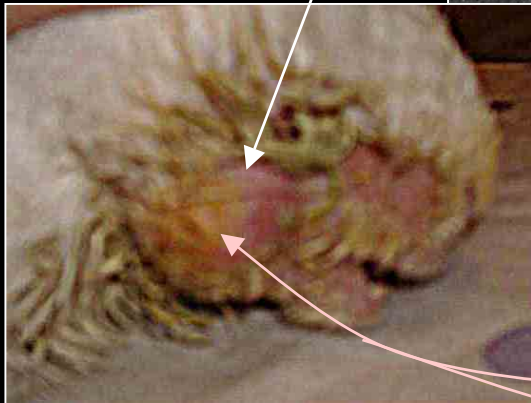




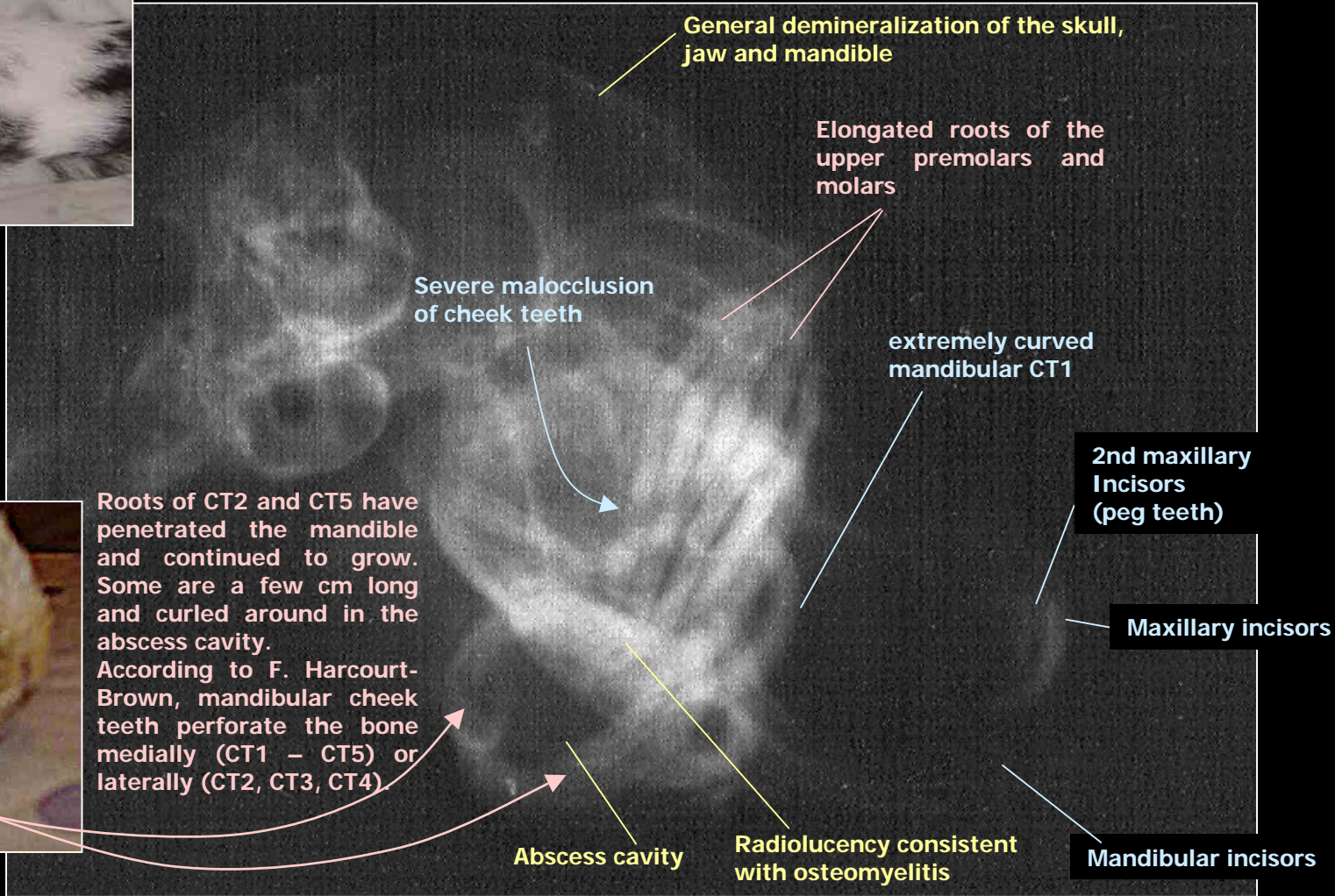
Radiography of a rabbit suffering from advanced dental disease and osteomyelitis



The rabbit is unable to close its mouth, as a result of tooth roots overgrowth of the premolar and molar mandibular teeth and subsequent abscessation. The roots have emerged from the mandibular bone and palpate as firm swelling on the latero-ventral side of the jaw.



Roots of CT2 and CT5 have penetrated the mandible and continued to grow. Some are a few cm long and curled around in the abscess cavity. According to F. Harcourt-Brown, mandibular cheek teeth perforate the bone medially (CT1 – CT5) or laterally (CT2, CT3, CT4)



General demineralization of the skull, jaw and mandible

Elongated roots of the upper premolars and molars

Severe malocclusion of cheek teeth

extremely curved mandibular CT1

2nd maxillary Incisors (peg teeth)

Maxillary incisors

Mandibular incisors

Abscess cavity

Radiolucency consistent with osteomyelitis